

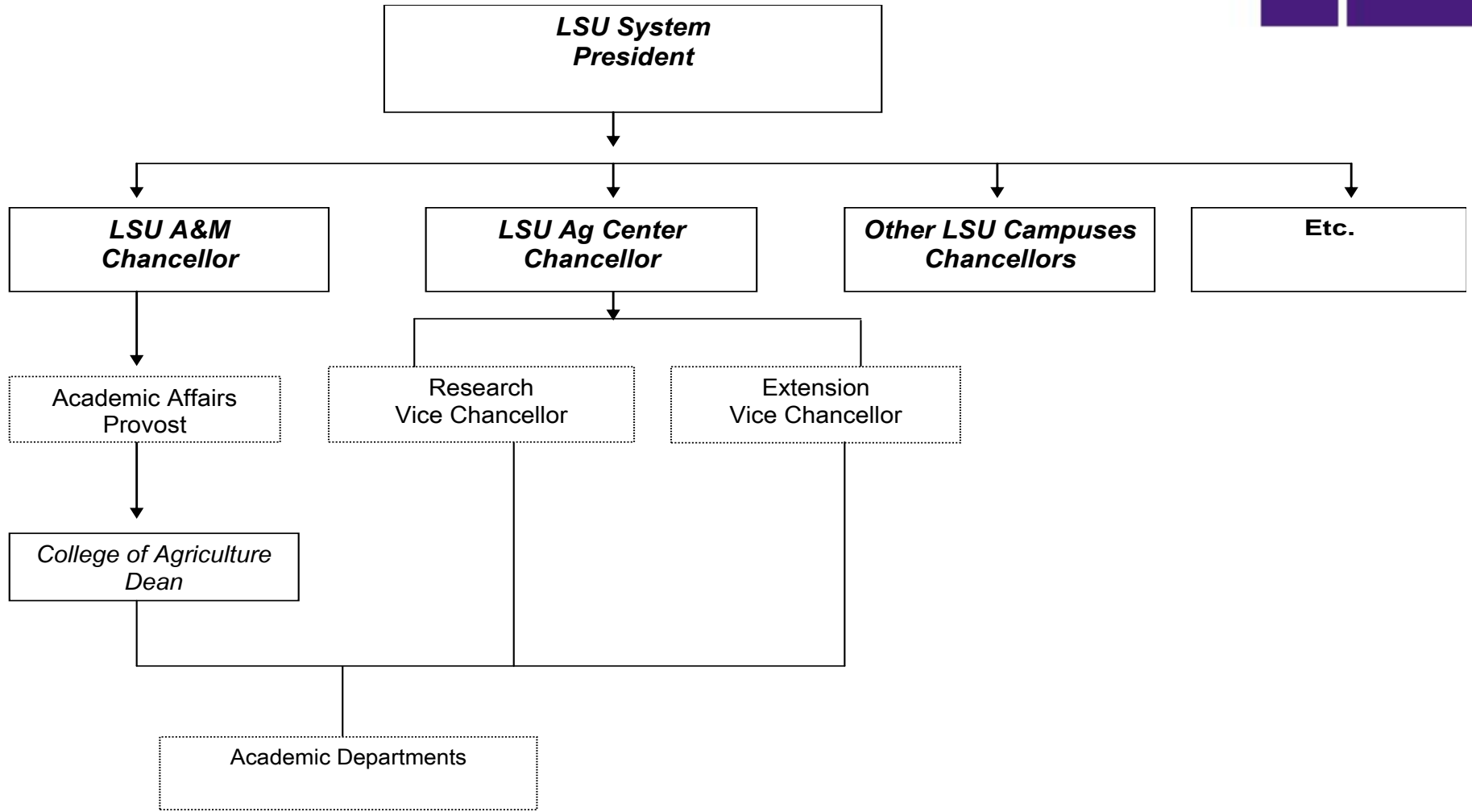
Sustaining High Cost Research & Teaching Facilities & Programs

Ken Koonce, Dean
College of Agriculture
September 18, 2012

- Can both functions utilize same facilities?
- Who manages?
- Who pays?
- Managing Conflicts

Sustaining High Cost Research & Teaching Facilities & Programs

- Is LSU unique?
- College of Agriculture - LSU A&M
- Ag Experiment Station, Cooperative Extension – LSU Ag Center
- Two separate campuses – each with a Chancellor



Sustaining High Cost Research & Teaching Facilities & Programs

- Livestock, swine, cattle, horses, poultry, dairy, research labs, equipment, transportation, etc.
- Research has traditionally carried the costs
- Conflicts between research & teaching demands, who manages?

Sustaining High Cost Research & Teaching Facilities & Programs

- Can animals/facilities be maintained for teaching only?
- Extension issues – 4-H, FFA Judging contests
- Food Processing – meats, dairy products etc.

Sustaining High Cost Research & Teaching Facilities & Programs

- Managing costs – animals for specific teaching only
- Special fees for student labs
- Can animal teaching programs be maintained without research programs

Sustaining High Cost Research & Teaching Facilities & Programs

- Partner with outside agencies - equine science
- Joint teaching-research positions
- Undergraduate research